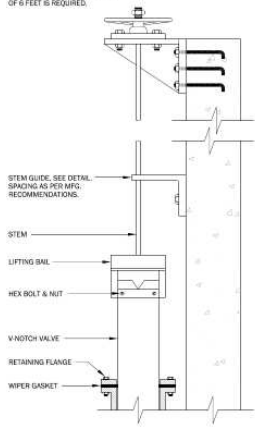


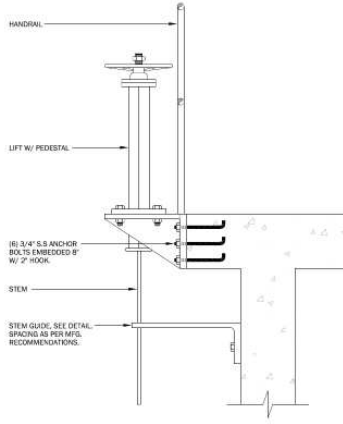
NOTE:

TELESCOPING VALVE SHALL BE CONFIGURED AND MOUNTED TO ALLOW SCISSORING FROM 1.582 TO 0.575 (6. AN ADJUSTMENT RANGE OF 6 FEET IS REQUIRED.)



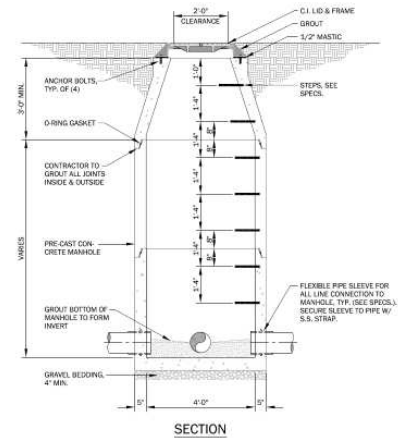
TELESCOPING VALVE DETAIL

NO SCALE

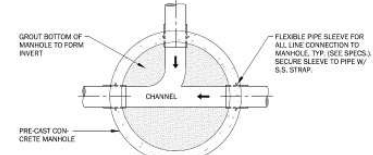


MUD VALVE OPERATOR DETAIL

NO SCALE



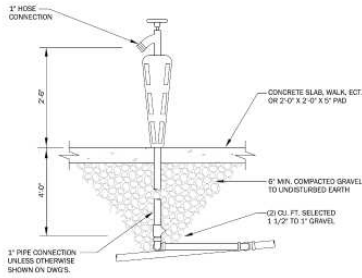
SECTION



PLAN

STANDARD MANHOLE DETAIL

NO SCALE

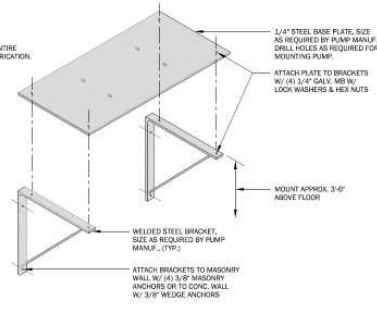


NON-FREEZE POST HYDRANT DETAIL

NO SCALE

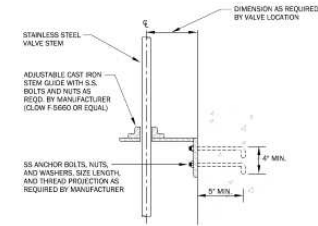
NOTE:

HOT DIP GALVANIZE ENTIRE ASSEMBLY AFTER FABRICATION.



SMALL PUMP SUPPORT DETAIL

NO SCALE



STEM GUIDE INSTALLATION

NO SCALE

DISCLAIMER

These drawings, and the information contained herein, are for general presentation purposes only, and are not intended, nor should be used, for engineering design plans.